

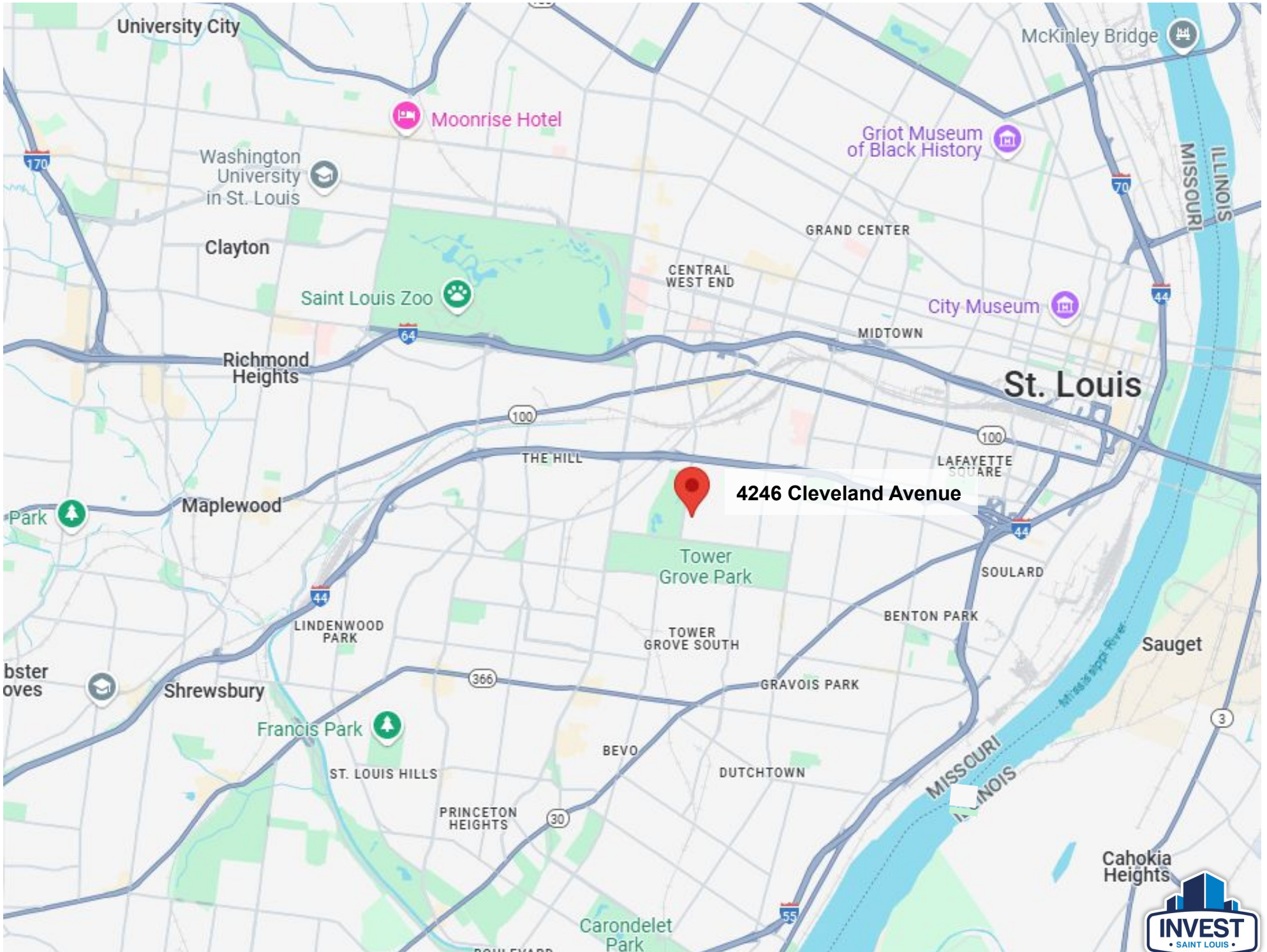


# 4246 Cleveland Ave, St. Louis, MO 63110

---

Spacious Move-In Ready Home in the Shaw Neighborhood





**4246 Cleveland Avenue**



## Property Overview:

---

**Historic Shaw Neighborhood Gem:** Charming 2-story, 2,588 square feet single-family home, nestled in St. Louis Shaw neighborhood, offers easy access to Tower Grove Park and the Missouri Botanical Gardens—just a 5-minute walk away.

**Flexible Living Space:** This very large 3 bedroom, 3 full bathroom home includes versatile spaces, allowing for additional bedrooms or bonus areas to meet your unique needs. The 2nd floor has an office space with closet that could be used as a fourth bedroom. The finished basement has a full bathroom (not included in listed/advertised bathroom count). Two car fully finished garage (power door, drywall).

**Timeless Details with Modern Updates:** All brick home features hardwood and tile flooring throughout and has been well updated, offering a seamless blend of historic charm and modern comfort.

### Renovation History:

- 2021: New floors, new appliances, new vinyl windows on third floor & front windows, other windows are wood and from 2008 renovation - they were capped in with aluminum and painted.
- 2008: Converted from duplex to single family (hence large size), all new electric, all new plumbing.

**Finished Basement:** The basement provides a finished living area, complete with a kitchenette/bar, finished full bathroom, storage, and utility room.

**Convenient Parking and Amenities:** Includes a spacious, well-kept garage and additional on-street parking. Central heating and cooling, plus washer and dryer hookups in both the basement and second floor.

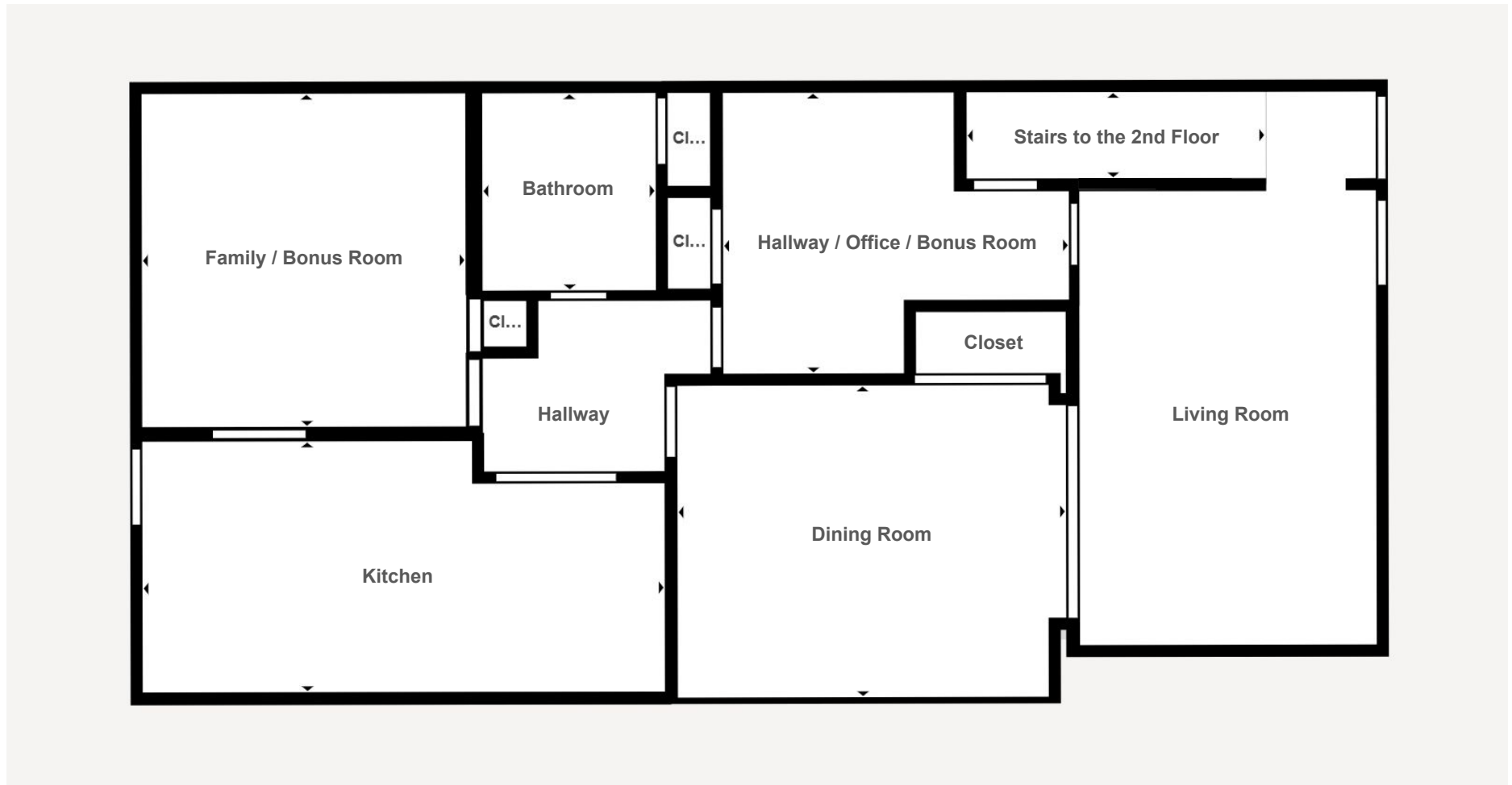
### Links:

- [Complete 3D Scan / Virtual Tour](#)
- [Full Resolution Photos](#)
- [Video Walkthrough of Entire Property](#)
- [Supplements \(disclosures, floorplan, etc\)](#)



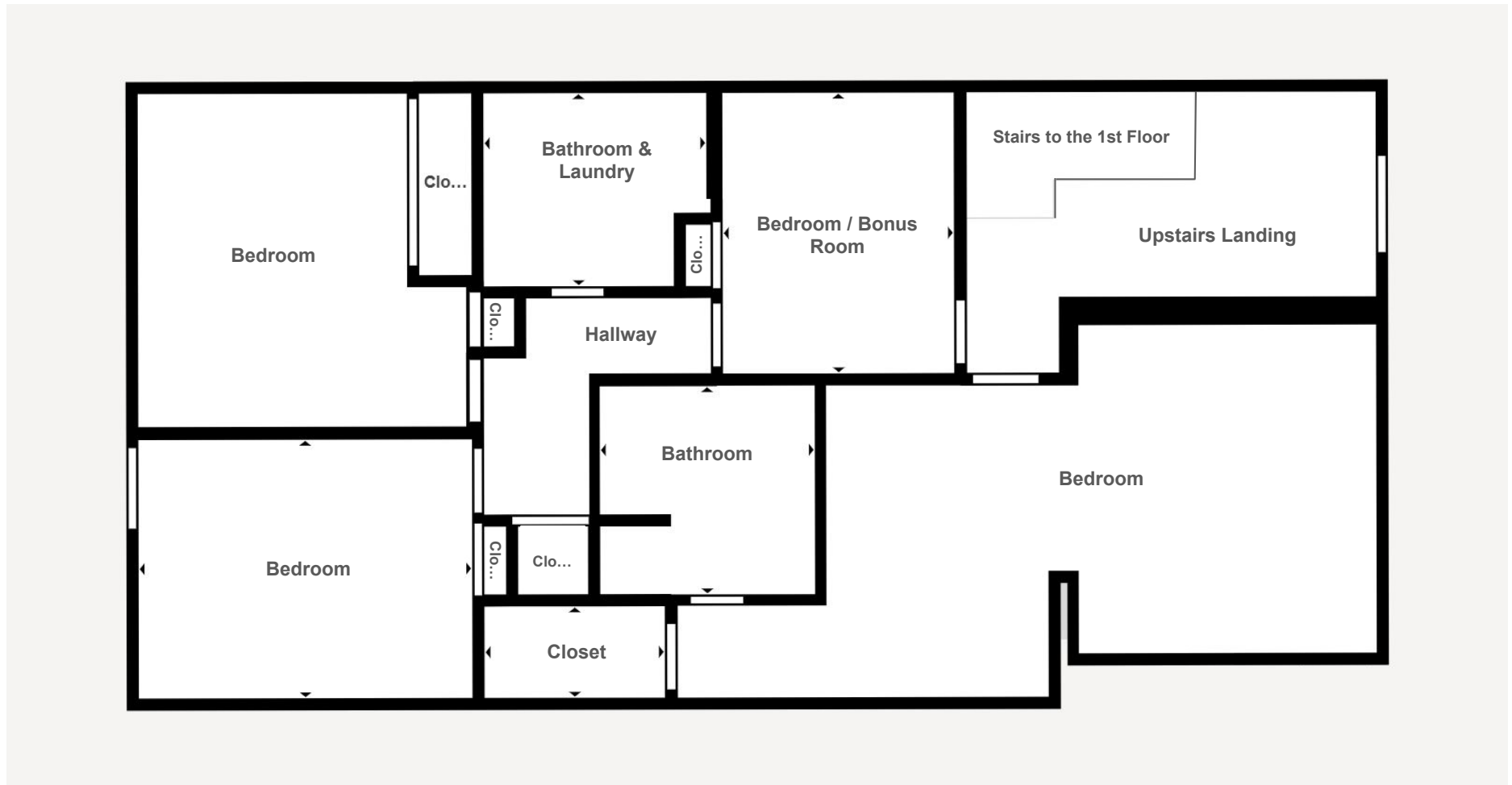
# 4246 Cleveland Avenue - Main Level Layout:

---



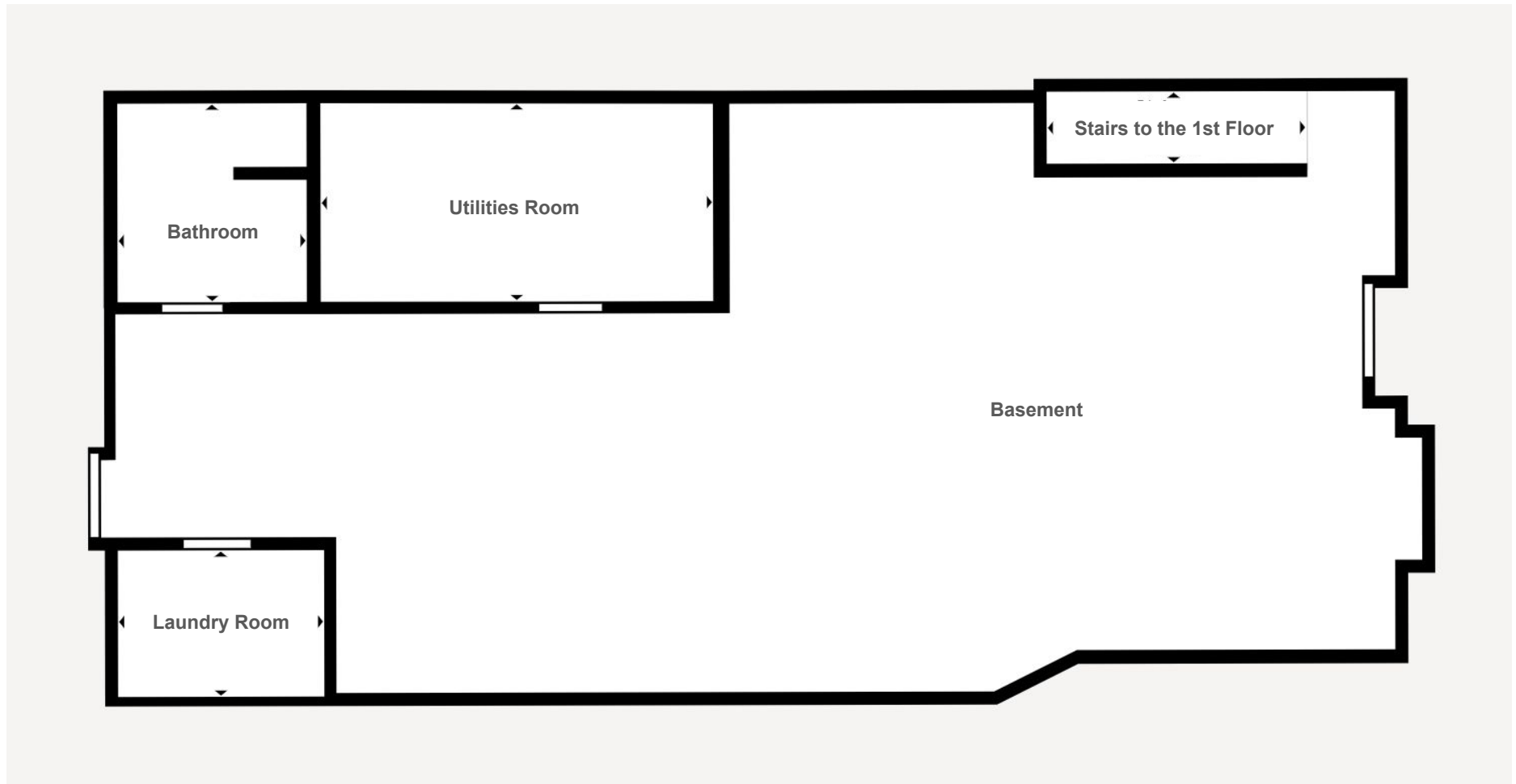
# 4246 Cleveland Avenue - Second Floor Layout:

---



## 4246 Cleveland Avenue - Basement Layout:

---

















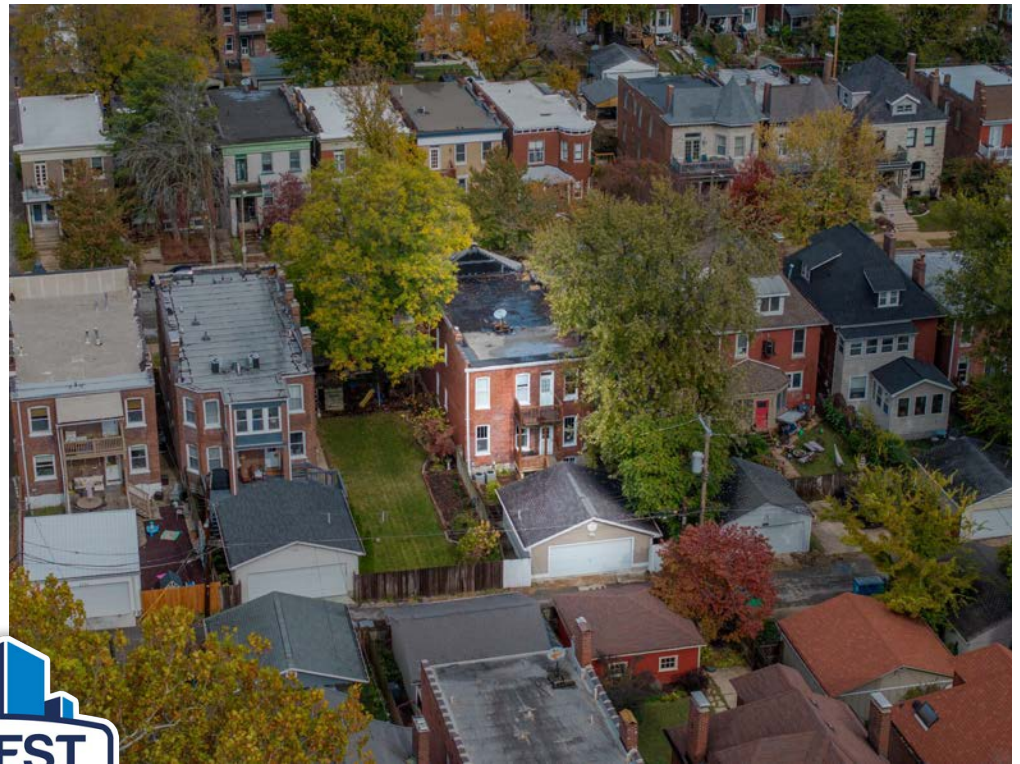












**INVEST**  
• SAINT LOUIS •







2309 Thurman Avenue  
St. Louis, Missouri 63110

Office Phone: (314) 325-6201  
Website: [www.InvestSTL.com](http://www.InvestSTL.com)

*Invest St. Louis is a licensed real estate  
brokerage in the state of Missouri.*

**Disclaimer:**

We obtained the following information above from sources we believe to be reliable. However, we have not verified its accuracy and make no guarantee, warranty or representation about it. It is submitted subject to the possibility of errors, omissions, change of price, rental or other conditions. We include projections, opinions, assumptions or estimates for example only, and they may not represent the current or future performance of the property. You and your tax and legal advisors should conduct your own investigation of the property and transaction.

**4246 Cleveland Ave, 63110**

**Priced at**

~~**\$489,000**~~

~~**\$449,000**~~

**\$425,000**

**Contact:**

---



**Patrick Kavanagh**

Broker

(314) 884-8685 Phone

[Patrick@InvestSTL.com](mailto:Patrick@InvestSTL.com)